

**Osteon**  
medical



# **Nexus Solutions**

100% Digital Full Arch Solutions.

# 100% DIGITAL HYBRID. UNMATCHED STRENGTH.



**1.5x** STRONGER<sup>1</sup>  
NEXUS 1570N  
CONVENTIONAL 1015N

**4.2x** LONGER LASTING<sup>1</sup>  
NEXUS 125k Cycles  
CONVENTIONAL 28.5k Cycles

## 3D Printed Try-In

If a tooth try-in is required, Osteon can 3D print the intended tooth overlay in a biocompatible material, this can then be tried in over the implant framework and any final adjustments can be made to the 3D printed overlay at chairside. The case will then be returned to our facility and any changes to the overlay are applied to the original design.

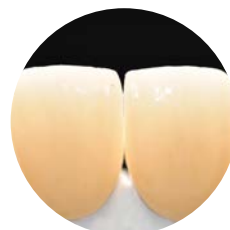


## Materials

**NC** Nano-Ceramic  
MPa 300

**Acr** Multilayer Acrylic  
MPa 125

**Zr** Zirconia  
MPa 1100



Lifelike  
translucency

# Nexus Hybrid

- ✓ Strength advantage of tooth structure due to monobloc design
- ✓ Lifelike pink gingiva options
- ✓ Precision fit between the two elements
- ✓ Lifelike interchangeable aesthetic overlay options
- ✓ Strength advantage of a precision milled titanium bar

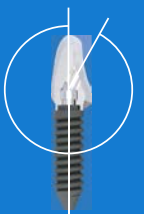
**1.5x** STRONGER<sup>1</sup>  
NEXUS 1570N  
CONVENTIONAL 1015N

**4.2x** LONGER LASTING<sup>1</sup>  
NEXUS 125k Cycles  
CONVENTIONAL 28.5k Cycles

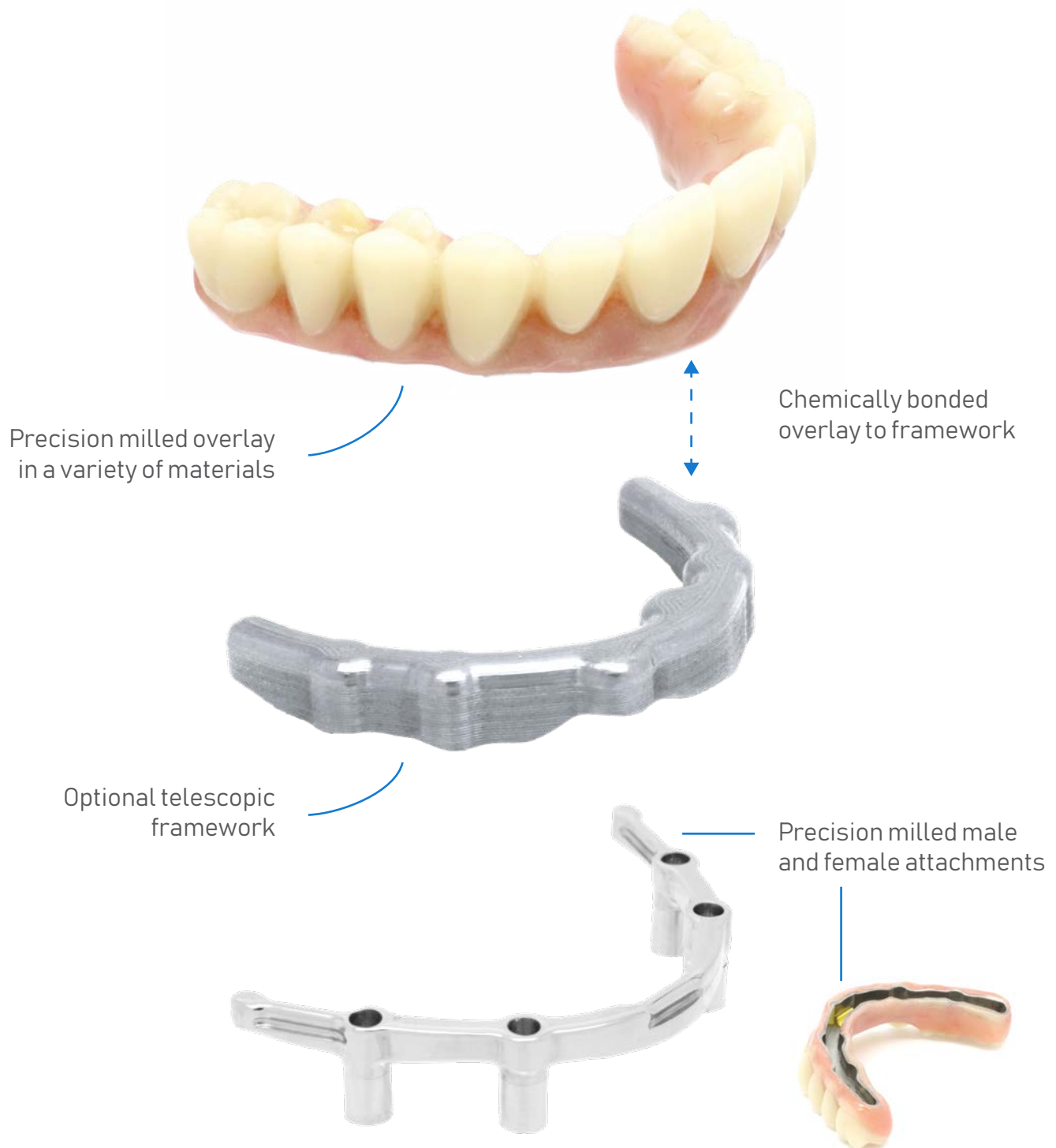


Nexus Plus is the complete digital full arch solution. One universal frame, digitally designed with an unlimited range of restorative overlay possibilities. The Nexus Plus demonstrates a new union of translucent lifelike materials and precision milled Titanium, engineered to be easily interchangeable.

Can incorporate Biaxial  
technology up to 30°



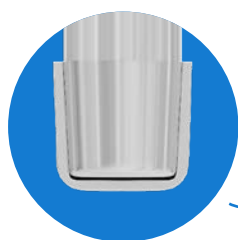
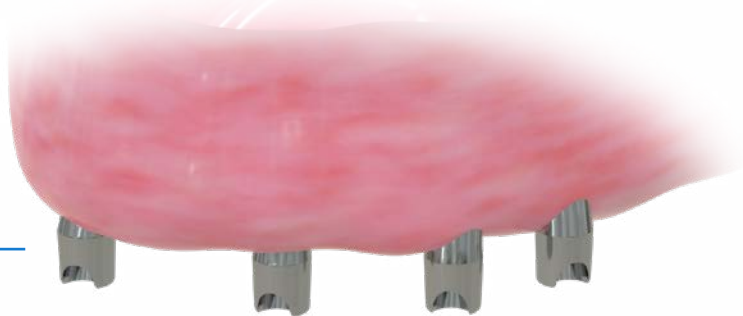
# Nexus Removable



Our new removable Nexus solutions offer a digitally created overdenture structure which is designed using our proprietary advanced CAD system and are precision milled in a variety of biocompatible materials. The Nexus Removable presents a new union of precision milled overdenture technology coupled with the advanced Nexus aesthetic overlays, proven to outperform conventional overdentures with significant increases in strength and resistance to wear.

# Nexus on Unicone

Improved cleanability and maintenance



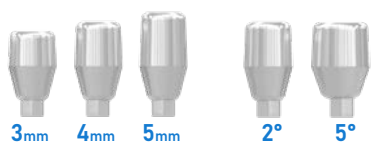
True friction fit



Optional metal framework



Supports a wide variety of restorative options

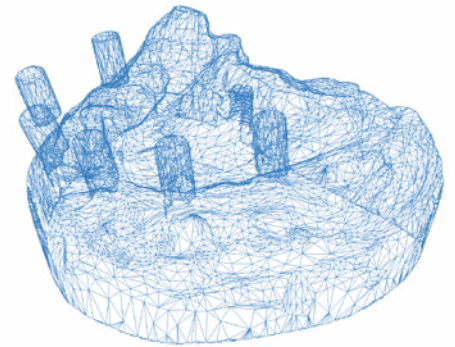


Available in 3 heights and 2 tapers for optimal fit and positioning

The Nexus on Unicone is a digitally created overdenture structure that brings all the advantages of the Nexus overlays, designed to suit the Unicone conical abutment solution. It is designed using Osteon's proprietary software and precision milled to ensure a true friction fit. These structures are intended to retain a pre-manufactured pure Titanium cap, and supports a wide variety of restorative overlay options.

# Nexus Immediate

- ✓ Fully milled solution for use in immediate surgery
- ✓ Reduces need to provisionalise
- ✓ Upgrades require little to no workup appointments
- ✓ Can be scanned with desktop or intra-oral scanner<sup>2</sup>



FROM SCAN TO DISPATCH IN



Osteon Medical now offers a game changing possibility to clients seeking an immediate solution. Using our “Immediate File Transfer Platform”, clients can electronically provide scans directly from their surgery or lab via either intra oral or local desktop scanners. Once scans are received these immediate cases are flagged and manufactured to the same high standards as all our other Nexus products. With a guaranteed 24-48 hour turnaround time, the trusted Nexus solution is now available faster than ever.<sup>3</sup>

<sup>1</sup> Than conventional metal acrylic hybrid (Stepped loading cycle protocol).

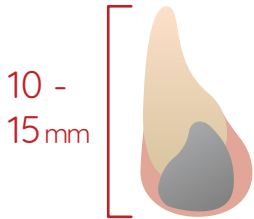
<sup>2</sup> Please validate your scanner with an Osteon team member.

<sup>3</sup> Only available in the titanium/acrylic combination.

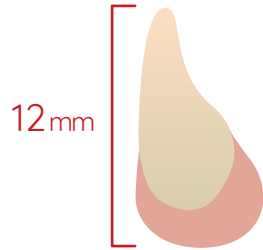
## Custom Design



Nexus Plus



Fixed Hybrid



Monolithic Zirconia

## Easily Interchangeable



### 1. Remove

Unscrew and remove the restoration from patient's mouth.



### 2. Separate

Separate the overlay from the framework, and sand blast the frame.



### 3. Re-cement

Re-cement the new restoration to the clean framework.



### 4. Re-insert

Re-insert in patient's mouth

## Our Process



### Conventional – Or – Digital

Prepare accurate wax up with implant fitment, and send case to Osteon production facility

Tooth set up is scanned and sent via Osteon's online portal.



### CAD Design & Validation

3d design file is sent to the client for approval.



### Production

Implant frameworks are precision milled using our state of the art, commercial grade machinery.



### Dispatch

Frameworks are passed through our rigorous quality control verification process, and shipped.





Australia: 03 9264 0111 | Outside Australia: +61 3 9264 0111  
info@osteonmedical.com | www.osteonmedical.com  
759-767 Springvale Road Mulgrave VIC 3170 Australia