



ANTERIOR RESTORATIONS

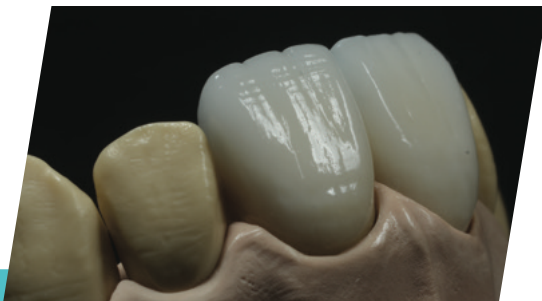
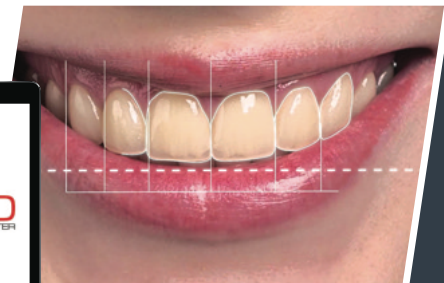
Dentists face esthetically demanding cases every day. This range from matching a single crown on a central incisor to a natural one, especially on an implant, to multiple veneer cases.

We love challenges but will need to work with our clients right from the beginning. Luckily we have now many tools that can help us to communicate and our patients to first visualise and then receive the restorations they desire.

Digital Smile Design |

The systematic approach using the set of digital photos first pioneered by Dr Christian Coachman had now evolved to an established system that will help dentists to plan a smile that will fit into the patient's face.

We had received training in the basic programme and we now using the DSD or similar apps to help our clients to plan.



Esthetic Wax up / Digital Wax-up |

From the DSD we can create an esthetic wax up and the template (putty index) for the dentist. He/She can then create the Emotional Mockup so that patients can have a 3D in-vivo visualisation of the new smile.



polar_eyes



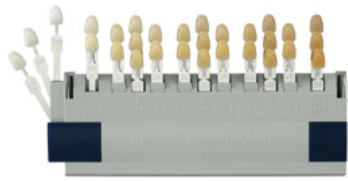
Shade Matching |



white_balance® gray reference card

One of the biggest problems in Indirect Restorative dentistry is **“Getting the Right Colour”**. Now we have a way of putting the science together with the Art of porcelain work with the innovative eLABor_aid® system, developed by the Bio-emulation group including the MDT Sascha Hein.

At the mean time, we offer our **in-Lab Shade Matching** service so our technicians can have the first-hand observations of the correct shade at the right light, using our own e.LAB system for you!



Esthetic Porcelain System



We use the Creation Porcelain System, IPS Ivocolor system or MiYO Esthetic System. These systems let us create beautiful, natural restorations on zirconia or e.max crowns or veneers.

THE BRILLIANCE OF CREATION CC:

- Unique, lifelike aesthetics thanks to highly pure potash feldspar
- Resilience due to consistently high flexural strength
- Natural colour effect and light dynamics due to leucite crystals
- Ease of handling thanks to consistent colour and layering system
- Processing reliability since 1988

